



1

Calculate the gain with and without feedback for an FET amplifier as in Fig. 14.7 for circuit values $R_1 = 800 \text{ k}\Omega$, $R_2 = 200 \text{ }\Omega$, $R_o = 40 \text{ k}\Omega$, $R_D = 8 \text{ k}\Omega$, and $g_m = 5000 \text{ }\mu\text{S}$.

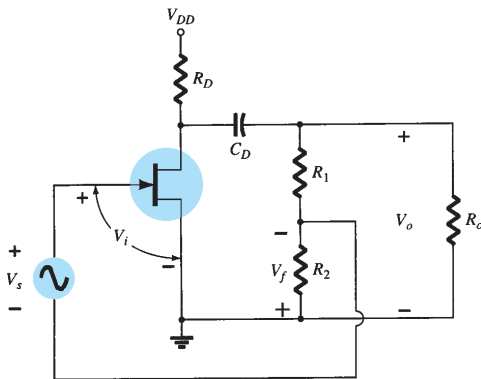


FIG. 14.7